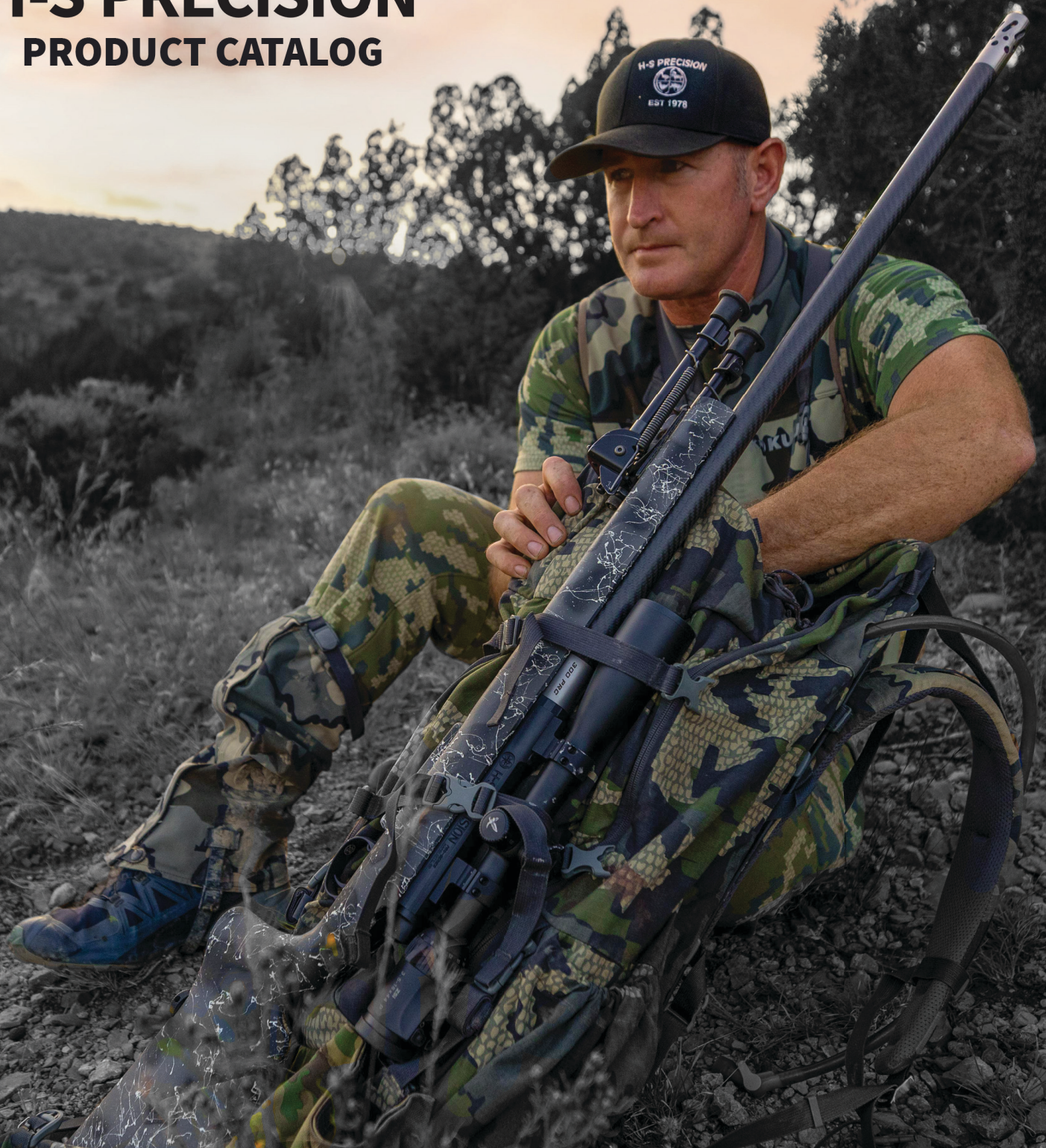
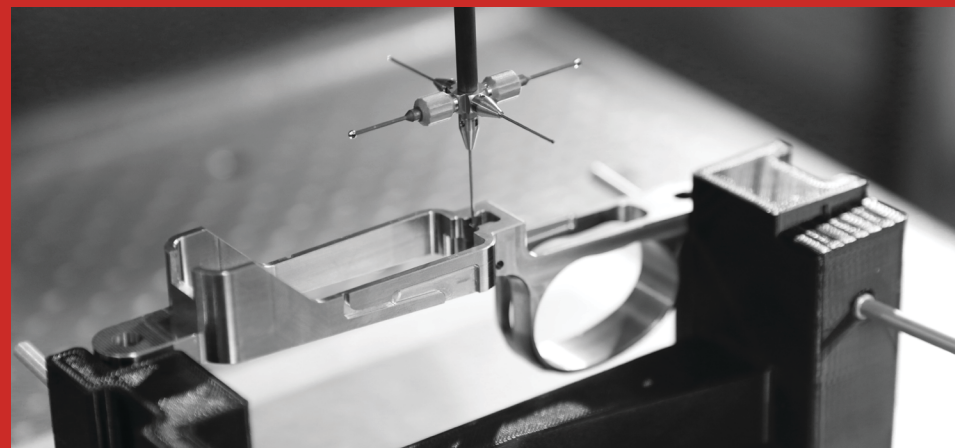
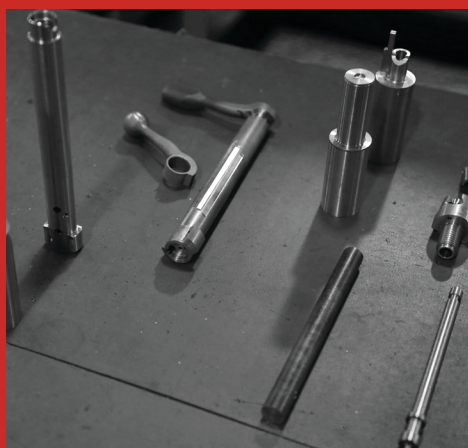




H-S PRECISION[®]

PRODUCT CATALOG





CONTENTS

04	HUNTING RIFLES
10	TACTICAL RIFLES
15	TAKEDOWN RIFLES
16	ORDERING YOUR RIFLE
18	BARREL BLANKS
20	3DLC® SCANNING
22	FLOOR METALS & MAGAZINES
27	AFTERMARKET STOCKS
32	FAQs & WARRANTY INFORMATION



A PART OF OUR PAST & OUR FUTURE.



IN LOVING MEMORY OF TOM HOUGHTON SR. (1942-2014)



TIM HOUGHTON, VP & COO

When my father, Tom Houghton Sr., started H-S Precision in 1978, he had one goal in mind: to produce the best firearms, barrels, stocks, and components in the world. It was one of the reasons he dedicated the company to designing and building everything not only in the USA, but right here in our facility. He prided himself on being an innovator and doing things first—like integrating a full length aluminum bedding block in his synthetic stocks.

I like to think I bring that same passion to H-S Precision. We have gone back to the original roots of the company—emphasizing quality above all else and pushing boundaries and doing things no one has ever seen before. For example, we now have the ability to laser scan and dimensionally certify our barrels—something no other firearms company in the world is capable of doing. We took a technology that was originally developed for NASA to scan their air tanks and said: “Let’s invest in that and make the best barrels in the world even better.”

We have worked tirelessly to improve our manufacturing techniques to make sure you have a rifle that will outperform any other rifle in the world. We also have the confidence that our rifles are products that can be passed down from generation to generation knowing it will not only last, but that it will be as accurate as when you first bought it.

We are a family company standing behind the products we make. My father used to tell me: “The only way to truly do great work is to love what you do.” He loved what he did, and I love what I do. When you buy an H-S Precision product, you will see and feel the passion of people who love what they do coming through in everything we make. It’s how this company started, and it is my privilege to continue the legacy my father started.

A handwritten signature in black ink, reading "Tim Houghton".

*Tim Houghton, Vice President
& Chief Operating Officer*

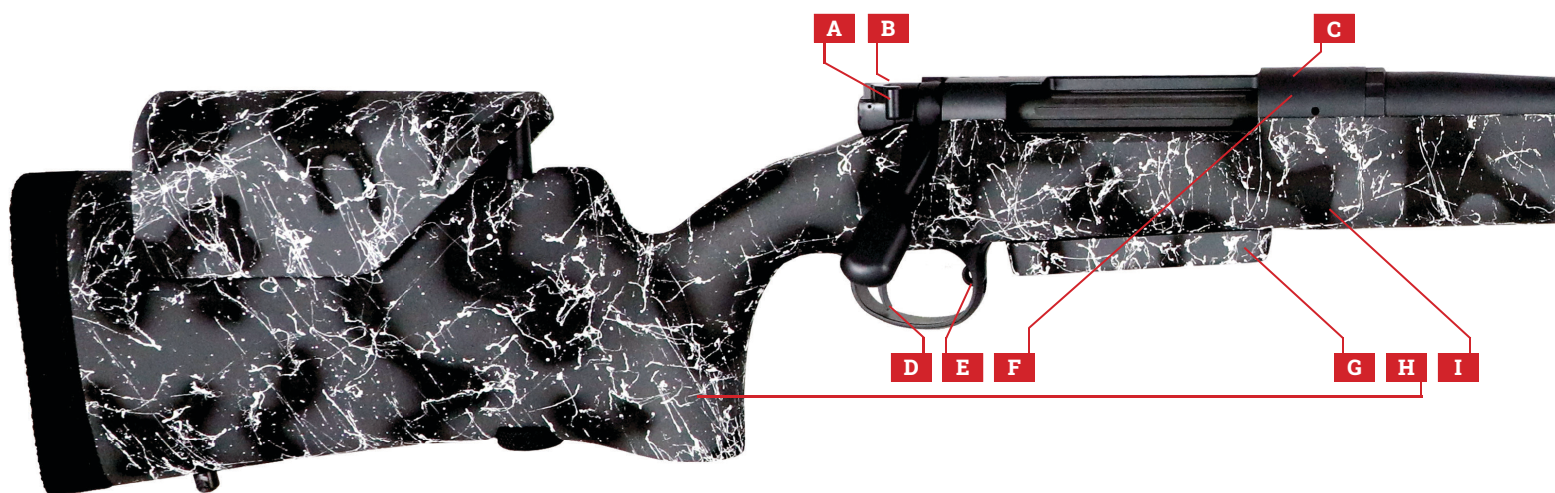
ENGINEERED FOR ACCURACY

EVERY H-S PRECISION RIFLE IS A SUM OF ITS PERFECT PARTS.

Accuracy is arguably the most important aspect of a rifle—and it is a form of craftsmanship we take very seriously here at H-S Precision.

Our team designs, engineers, and manufactures every component of the Pro-Series® line of semi-custom bolt action rifles at our factory in Rapid City, South Dakota. Starting with the raw materials, each step of the manufacturing process is met

with incredibly strict quality control procedures—checked with the best technology available in the industry. In combination, these features pictured below yield a strong, reliable, and accurate shooting platform worthy of the H-S Precision name.



OUR PRO-SERIES® 1/2 MOA GUARANTEE

Every firearm is tested in our state-of-the-art, underground, 100-yard range for guaranteed accuracy. All Pro-Series® rifles, .30 caliber and smaller, are guaranteed to shoot ½ MOA or better at 100 yards. (Rifles over .30 caliber are guaranteed to shoot 1 MOA or better.) A target, including load data, is provided to the customer.

FEATURED RIFLE: Pro-Series® PLR in 300 PRC, Fluted H-S Barrel, Urban Camo Paint, Gray Cerakote™ with H-S Adjustable Cheek Stock, H-S Tactical Bolt Handle, and H-S Removable Threaded Muzzle Brake

A SAFETY
Three-position safety for fire, safe, and bolt lock. Red dot provides visual cocking indication.

B BOLT RELEASE
Located on the tang for convenience. Allows bolt removal without having to pull the trigger.

C BOLT FACE
Semi-cone design featuring oversized internal claw extractor.

D TRIGGER
Fully adjustable from 3.25-5 lbs (by H-S Precision). We have engineered our H-S trigger to be free from creep or drag.

E MAG LATCH
Skeletonized design for positive engagement and easy removal—even with gloves on.

F PRO-SERIES® ACTION
Our action body is machined from pre-hardened 17-4PH stainless steel with wire EDM cut bolt raceways.

G DETACHABLE MAGAZINE BOX
Stainless steel floor metal and stainless steel detachable magazine box with center feed design for positive cartridge feeding.

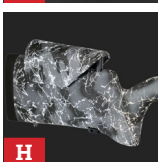
H STOCK
Individually made, hand-laminated synthetic layering using Kevlar®, fiberglass, carbon fiber, and a full- or receiver-length 7075-T7 aluminum bedding block.

I BEDDING BLOCK
Our integral aluminum bedding block is the foundation for all of our stocks. CNC machined from 7075-T7 aircraft grade aluminum, the bedding block provides an exact fit to the action and eliminates the need for conventional bedding.

J BARREL
H-S barrels are machined from munitions grade 416R stainless steel. Our proprietary cut rifling process creates the most accurate barrels on the market.

K CUT RIFLING
Our proprietary cut rifling process adds little to no additional stress on the barrel, creating accuracy that is unmatched.

L TARGET BARREL CROWN
The crown of a rifle barrel allows a clean exit from the bore. H-S Precision barrels are crowned on a CNC lathe with an 11° target recess to protect the barrel and enhance accuracy.



PRO-SERIES® HUNTING RIFLES

**HUNTING IS MORE THAN A SPORT—
IT'S AN OPPORTUNITY TO CONNECT.**

If you're like so many sportsmen, hunting is a part of an incredible amount of memories we make throughout a lifetime. At H-S Precision,

we are passionate about ethical long range hunting and understand how important making an accurate shot on a once-in-a-lifetime hunt is. We engineer, design, and manufacture every component of our hunting rifles in-house at our facility in Rapid City,

South Dakota. You tell us what you want and we build the rifle exactly to your specifications. From length and caliber to color and accessories, we want your Pro-Series® rifle to be as great as the trophy hunt you're heading on.



PLC LONG RANGE CARBON FIBER RIFLE

FEATURES INCLUDE

- H-S Precision cut rifled barrel wrapped in carbon fiber
- Ambidextrous, vertical grip stock
- Adjustable cheek piece (fixed LOP)
- Available in any standard SAAMI caliber
- Left & right hand customizations available
- Adjustable trigger
- H-S Precision detachable magazine feeding system (center feed design)
- Full-length aluminum bedding block



PLC, Urban Camo, Midnight Cerakote™ with H-S Steel Removable Threaded Muzzle Brake, Avg. Weight: 9.05 lbs. *(actual weight will vary based on caliber & barrel length)*



PLC, Olive-Black Camo, Olive Cerakote™ with Matching H-S Removable Threaded Muzzle Brake and H-S Tactical Bolt Handle, Avg. Weight: 9.05 lbs. *(actual weight will vary based on caliber & barrel length)*

SPL SPORTER LIGHTWEIGHT RIFLE

FEATURES INCLUDE

- H-S Precision cut rifled, fluted barrel
- Ambidextrous grip (thumbhole grip optional)
- Lightweight sporter stock
- Fixed cheek piece & LOP
- Available in standard SAAMI calibers (up to .338 Win Mag)
- Left & right hand customizations available
- Adjustable trigger
- H-S Precision detachable magazine feeding system (center feed design)
- Full-length aluminum bedding block



SPL, Tri Color Desert Camo, Midnight Cerakote™ with Matching H-S Removable Threaded Muzzle Brake, Avg. Weight: 7.3 lbs. *(actual weight will vary based on caliber & barrel length)*



SPL Thumbhole Grip, Tri Color Desert Camo, Tan Cerakote™ with Matching H-S Removable Threaded Muzzle Brake and H-S Tactical Bolt Handle, Avg. Weight: 7.3 lbs. *(actual weight will vary based on caliber & barrel length)*

IT'S NOT JUST THE RIFLE...

*Accessories are available to create
the setup you've been dreaming of.*

We know ordering a custom rifle
is a big deal, and we're here to make sure
you get exactly what you've been looking
for. From a scope and rings to bipods and
muzzle brakes, we can set up your rifle
completely ready to go
on your next hunt of a lifetime.

Every H-S Precision Pro-Series® rifle
ships in a hard case (upgrades available).



PHL PRO HUNTER LIGHTWEIGHT RIFLE

FEATURES INCLUDE

- H-S Precision cut rifled, fluted barrel
- Ambidextrous, pistol grip
- Lightweight composite stock
- Fixed cheek piece & LOP
- Available in short action SAAMI calibers (up to .300 WSM)
- Left & right hand customizations available
- Adjustable trigger
- H-S Precision detachable magazine feeding system (center feed design)
- Full-length aluminum bedding block



PHL, Black-Tan Camo, Midnight Cerakote™, Avg. Weight: 5.8 lbs. (actual weight will vary based on caliber & barrel length)

PLR PRO HUNTER LONG RANGE RIFLE

FEATURES INCLUDE

- H-S Precision cut rifled barrel (fluted optional; magnum contour)
- Composite stock, vertical grip
- Fixed cheek piece & LOP (adjustable cheek piece available)
- Available in all standard SAAMI calibers
- Left & right hand customizations available
- Adjustable trigger
- H-S Precision detachable magazine feeding system (center feed design)
- Full-length aluminum bedding block



PLR, Grassland Camo, Midnight Cerakote™, Avg. Weight: 8.2 lbs. (actual weight will vary based on caliber & barrel length)

SPR SPORTER RIFLE

FEATURES INCLUDE

- H-S Precision cut rifled barrel (magnum sporter contour)
- Composite stock, pistol grip
- Fixed cheek piece & LOP
- Available in standard SAAMI calibers (up to .338 Win Mag)
- Left & right hand customizations available
- Adjustable trigger
- H-S Precision detachable magazine feeding system (center feed design)
- Full-length aluminum bedding block



SPR, Black, Midnight Cerakote™, Avg. Weight: 7.6 lbs. (actual weight will vary based on caliber & barrel length)



DESIGNED

Planned or conceived in detail or for a specific purpose

ENGINEERED

Skillfully and deliberately arranged rather than arising naturally or spontaneously

MANUFACTURED

To make from raw materials by hand or by machinery

PLC – LONG RANGE CARBON FIBER



H-S PRECISION®

ESTABLISHED 1978

Carbon fiber barrel, adjustable cheek piece stock, and guaranteed accuracy.
The PLC is built one at a time to YOUR exact specifications.

hsprecision.com

VAR VARMINT RIFLE

FEATURES INCLUDE

- H-S Precision cut rifled, fluted barrel (magnum contour)
- Composite stock, option of grip style
- Fixed cheek piece & LOP
- Available in any standard SAAMI calibers
- Left & right hand customizations available
- Adjustable trigger
- H-S Precision detachable magazine feeding system (center feed design)
- Full-length aluminum bedding block



VAR, Desert Camo, Midnight Cerakote™, Avg. Weight: 8.7 lbs. (actual weight will vary based on caliber & barrel length)

VAR, Grassland Camo, Olive Cerakote™, Avg. Weight: 8.7 lbs. (actual weight will vary based on caliber & barrel length)

PHR PRO HUNTER RIFLE

FEATURES INCLUDE

- H-S Precision cut rifled, fluted barrel (iron sights available)
- Composite stock, pistol grip
- Fixed cheek piece & LOP
- Available in standard SAAMI calibers (designed for big bore calibers)
- Left & right hand customizations available
- Adjustable trigger
- H-S Precision detachable magazine feeding system (center feed design)
- Full-length aluminum bedding block



PHR, Black-Tan, Midnight Cerakote™ with Matching H-S Removable Threaded Muzzle Brake, Avg. Weight: 8.7 lbs. (actual weight will vary based on caliber & barrel length)

PHR, Tan-Black, Midnight Cerakote™ with Iron Sights and Matching H-S Removable Threaded Muzzle Brake, Avg. Weight: 8.7 lbs. (actual weight will vary based on caliber & barrel length)

PRO-SERIES® TACTICAL RIFLES

THE WORLD'S MOST ACCURATE RIFLES ARE MADE HERE.

In the late 1990's, H-S Precision's Pro-Series® Heavy Tactical Rifle (HTR) put our small company in South Dakota on the map for rifle

manufacturing capabilities. Because of the HTR's incredible accuracy and reliability, H-S Precision has earned contracts for many government and law enforcement agencies around the world (such as the FBI and IDF). From precision rifle competitive shooting

to national defense, our Pro-Series® Tactical lineup is incomparable. The vertical grip stock is designed with a fully adjustable length of pull and cheek piece, making the HTR the most user friendly and versatile shooting platform we offer.



HTR HEAVY TACTICAL PRECISION RIFLE

FEATURES INCLUDE

- H-S Precision cut rifled barrel
- Composite stock, vertical grip
- Adjustable cheek piece & LOP
- Available in standard SAAMI calibers
- Left & right hand customizations available
- Adjustable trigger
- H-S Precision detachable magazine feeding system (center feed design)
- Full-length aluminum bedding block



HTR, Black-Tan, Bronze Cerakote™ with Matching H-S Removable Threaded H Brake and H-S Tactical Bolt Handle, Avg. Weight: 14 lbs. (actual weight will vary based on caliber & barrel length)

HTR HEAVY TACTICAL RIFLE

FEATURES INCLUDE

- H-S Precision cut rifled, fluted barrel
- Composite stock, vertical grip
- Adjustable cheek piece & LOP
- Available in standard SAAMI calibers
- Left & right hand customizations available
- Adjustable trigger
- H-S Precision detachable magazine feeding system (center feed design)
- Full-length aluminum bedding block



HTR, Custom Grassland Camo, Bronze Cerakote™ with Matching H-S Removable Threaded H Brake and H-S Tactical Bolt Handle, optional Pic rail, Avg. Weight: 11.7 lbs. (actual weight will vary based on caliber & barrel length)

STR SHORT TACTICAL RIFLE

FEATURES INCLUDE

- H-S Precision cut rifled 20" barrel
- Composite stock, pistol grip
- Adjustable cheek piece & LOP
- Available in short action SAAMI calibers only
- Left & right hand customizations available
- Adjustable trigger
- H-S Precision detachable magazine feeding system (center feed design)
- Full-length aluminum bedding block



STR, Urban Camo, Midnight Cerakote™, Avg. Weight: 8.9 lbs. (actual weight will vary based on caliber & barrel length)



1/2 MOA ACCURACY GUARANTEED

*1 MOA Accuracy Guarantee
over .30 caliber.*

H-S Precision has one of the best accuracy guarantees in the industry. We not only guarantee it, we prove it with a test target and load data provided with every rifle.

RDR RAPID DEPLOYMENT RIFLE

FEATURES INCLUDE

- H-S Precision cut rifled, fluted barrel
- Composite stock, pistol grip
- Fixed cheek piece & LOP
- Available in short action SAAMI calibers only
- Left & right hand customizations available
- Adjustable trigger
- H-S Precision detachable magazine feeding system (center feed design)
- Full-length aluminum bedding block



RDR, Gray-Black, Midnight Cerakote™, Avg. Weight: 8.1 lbs. (actual weight will vary based on caliber & barrel length)



RDR, Urban Camo, Midnight Cerakote™, Avg. Weight: 8.1 lbs. (actual weight will vary based on caliber & barrel length)

RDТ RAPID DEPLOYMENT THUMBHOLE RIFLE

FEATURES INCLUDE

- H-S Precision cut rifled 20" barrel
- Composite stock, thumbhole grip
- Adjustable cheek piece & LOP
- Available in short action SAAMI calibers only
- Available in right hand only
- Adjustable trigger
- H-S Precision detachable magazine feeding system (center feed design)
- Full-length aluminum bedding block



RDT, Black-Tan, Midnight Cerakote™ with Matching H-S Removable Threaded H Brake and H-S Tactical Bolt Handle, Avg. Weight: 9.8 lbs. (actual weight will vary based on caliber & barrel length)



RDT, Black, Midnight Cerakote™, Avg. Weight: 9.8 lbs. (actual weight will vary based on caliber & barrel length)



REDEFINING PRECISION ONE COMPONENT AT A TIME

H-S Precision is a complete gun manufacturer producing high-quality firearms and products for the shooting sports industry using world-class techniques, proprietary technology, and state-of-the-art equipment.

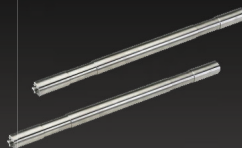
DESIGNED, ENGINEERED, & MANUFACTURED IN THE USA
HSPRECISION.COM 605-341-3006 RAPID CITY, SOUTH DAKOTA



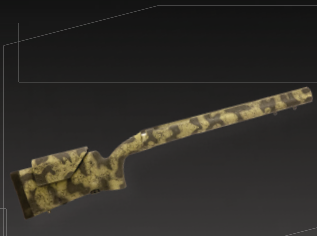
**PRO-SERIES®
CUSTOM RIFLES**



**DETACHABLE
MAGAZINE KITS**



**CUT RIFLED
BARRELS**



**AFTERMARKET
STOCKS**

PRO-SERIES® TAKEDOWN RIFLES

THE MOST ADVANCED PRO-SERIES® SHOOTING SYSTEM EVER CREATED.

The Pro-Series® Takedown lineup is designed to be disassembled and reassembled while still maintaining accuracy and reliability. This is because of our patented interrupted thread design which is seamless at the end of the receiver.

The multi-caliber format with a compact transport case is useful in a variety of calibers, especially when traveling. Our Pro-Series® Takedown has the same guaranteed accuracy as our legendary fixed rifles and has a repeatability of 1 MOA or better after being taken apart and reassembled. The Takedown rifle can be personalized to fit any scenario it is intended for no matter the shooter's need.



As with all Pro-Series® rifles, your shipment will come with a free hard case and foam inserts. Custom cut case upgrades are available. (Pictured above.)

PTD PRO HUNTER TAKEDOWN RIFLE

FEATURES INCLUDE

- H-S Precision cut rifled barrel
- Composite stock, pistol grip
- Fixed cheek piece & LOP
- Available in any standard SAAMI calibers
- Available in right hand only
- Adjustable trigger
- H-S Precision detachable magazine feeding system (center feed design)
- Full-length aluminum bedding block



PTD, Sand, Midnight Cerakote™, Avg. Weight: 9.5 lbs. (actual weight will vary based on caliber & barrel length)

TTD TACTICAL TAKEDOWN RIFLE

FEATURES INCLUDE

- H-S Precision cut rifled 20" barrel
- Composite stock, vertical grip
- Adjustable cheek piece & LOP
- Available in any standard SAAMI calibers
- Available in right hand only
- Adjustable trigger
- H-S Precision detachable magazine feeding system (center feed design)
- Full-length aluminum bedding block



TTD, Black, Midnight Cerakote™ with Matching H-S Removable Threaded Muzzle Brake, Avg. Weight: 12.5 lbs. (actual weight will vary based on caliber & barrel length)

ORDERING YOUR PRO-SERIES® RIFLE

Ordering a custom rifle is not as complicated as you may think. When you work with our team at H-S Precision, you are talking to experts. They use our products hunting and in long range competitions throughout the nation and can help build the rifle you've been dreaming of.

1 PLATFORM & CALIBER

Our team will talk through the different scenarios to find the best platform and caliber for you.

2 BARREL & STOCK CHARACTERISTICS

Next, you will select barrel and stock characteristics such as twist rate, length of pull, and colors.

3 ACCESSORIES

Last, but not least, we will get you set up with the accessories you want to complete your Pro-Series® rifle.



Featured Rifle: Pro-Series® PLR in 7MM Rem Mag, painted in Urban Camo with Gray Cerakote™, fluted H-S cut rifled 26" barrel, H-S muzzle brake, H-S tactical bolt handle, Harris Bipod, Talley Manufacturing ring and base combos, Swarovski Z8i Scope



START BUILDING YOUR PRO-SERIES®
ONLINE AT HSPRECISION.COM

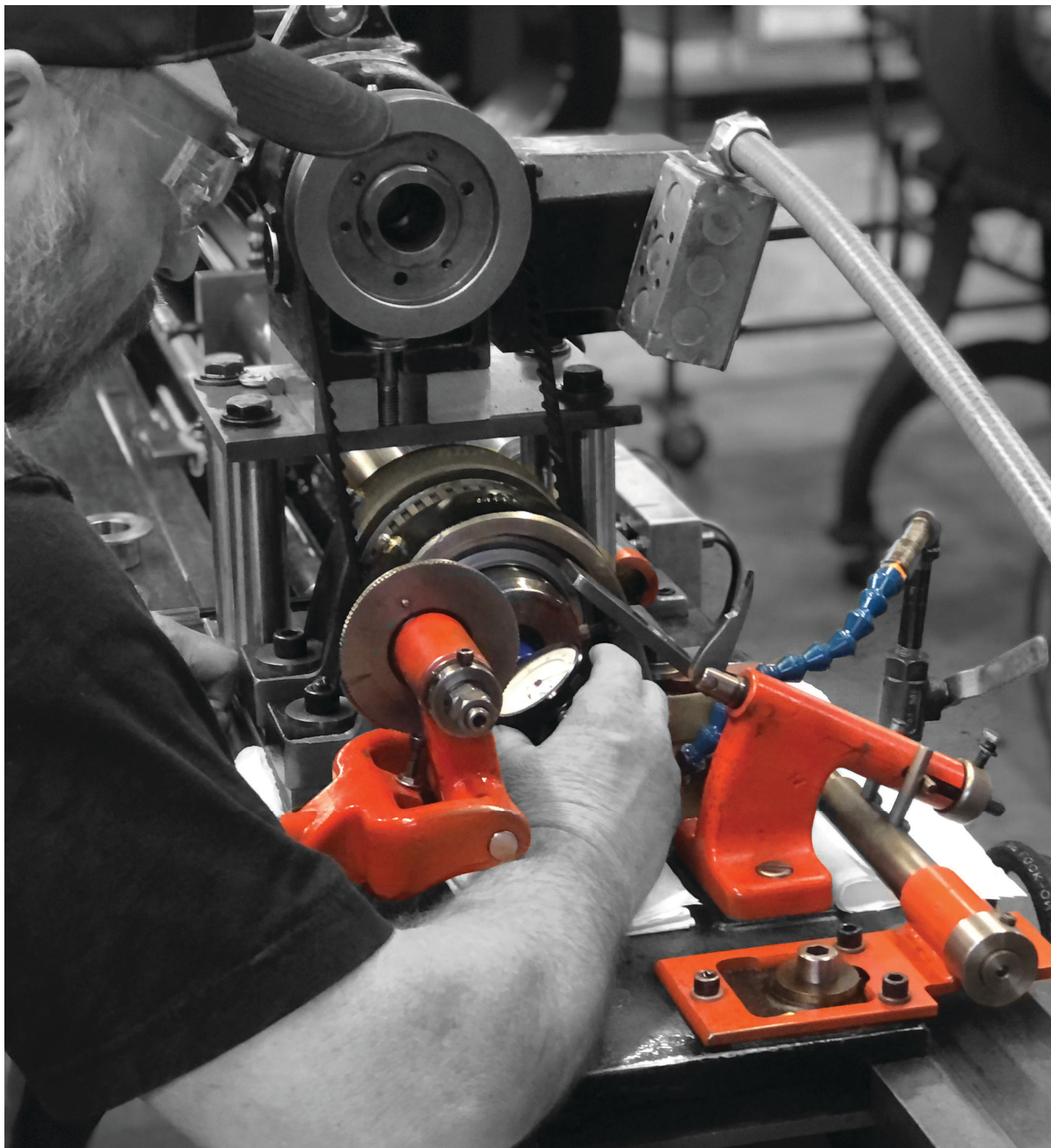


416 R STAINLESS STEEL PRO-SERIES® BARREL BLANKS

Our cut rifled stainless steel barrel blanks are manufactured using a single-point cut rifling method. Every barrel is individually manufactured and

built to your specifications. Available in most bore diameters, various contours, twist rates, and barrel lengths—we are bound to have what you need for

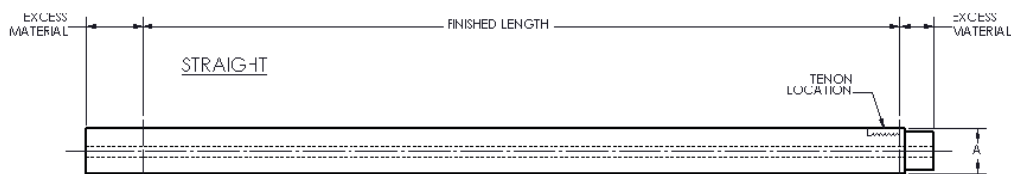
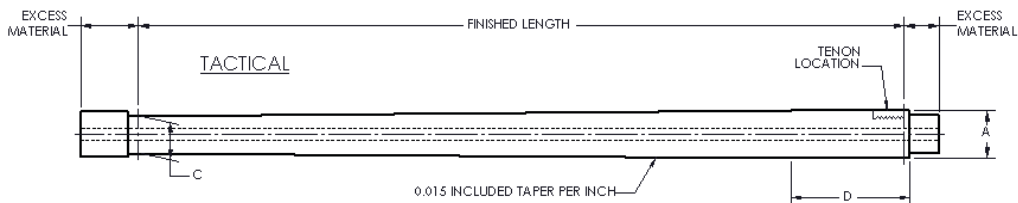
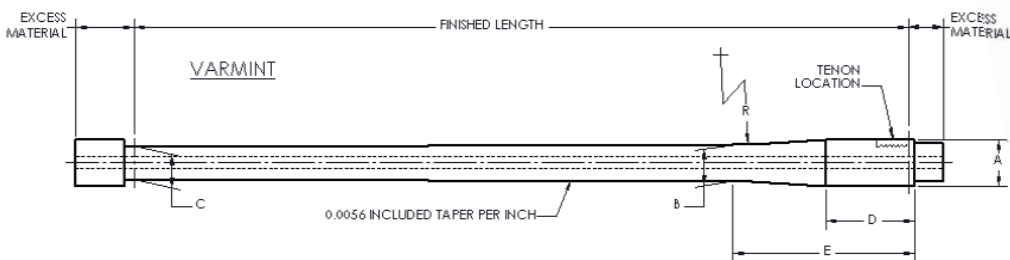
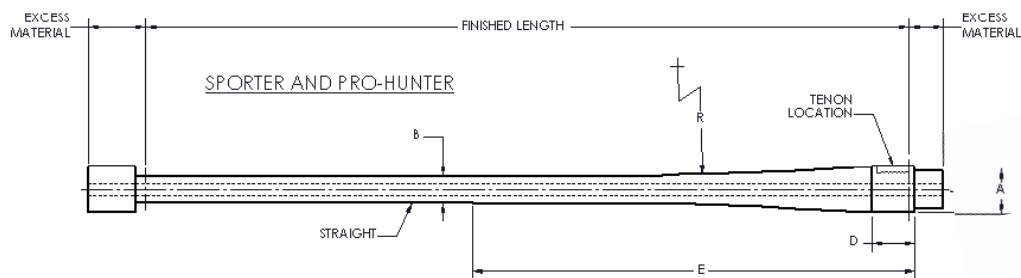
your build. All contours are available in fluted or non-fluted configurations and are built slightly longer than the desired finish length.



NF**NONFLUTED****F****FLUTED***Stainless Steel Match Grade Cut Rifled Barrel*

Barrel Blank Contour #	Type	A*	B	C	D	E	Radius	Available Lengths
1	Light Sporter	ø1.215	ø0.675	--	1.124	11.590	70.875	16.5 to 26
2	Heavy Sporter	ø1.215	ø0.675	--	1.698	17.291	70.875	16.5 to 26
3	Pro Hunter	ø1.215	ø0.750	--	1.001	18.822	70.875	16.5 to 28
4	Varmint	ø1.215	ø0.940	ø0.831 @ 24"	2.293	4.678	8.000	16.5 to 28
5	Tactical	ø1.215	--	ø0.900 @ 24"	3.120	--	--	16.5 to 30
6	Straight	ø1.200	--	--	--	--	--	20 to 30

All contours are the same ones used on H-S Precision rifles. Dimensions shown are for barrels in the blank state. Available lengths in 2" increments.



Cut rifling is the oldest method of rifling a gun barrel - and how every H-S Precision barrel is made. The process removes metal from the surface of the bore to create the grooves using a single-bladed, hook-type cutter of groove width that is pulled through the barrel. Each groove is cut individually with multiple passes of the cutter.

Why do we do this? Three main reasons: the rifling twist is consistent from one end to the other, it adds little or no additional stress on the barrel, and closer tolerance can be held.

3DLC® LASER BARREL SCANNING TECHNOLOGY

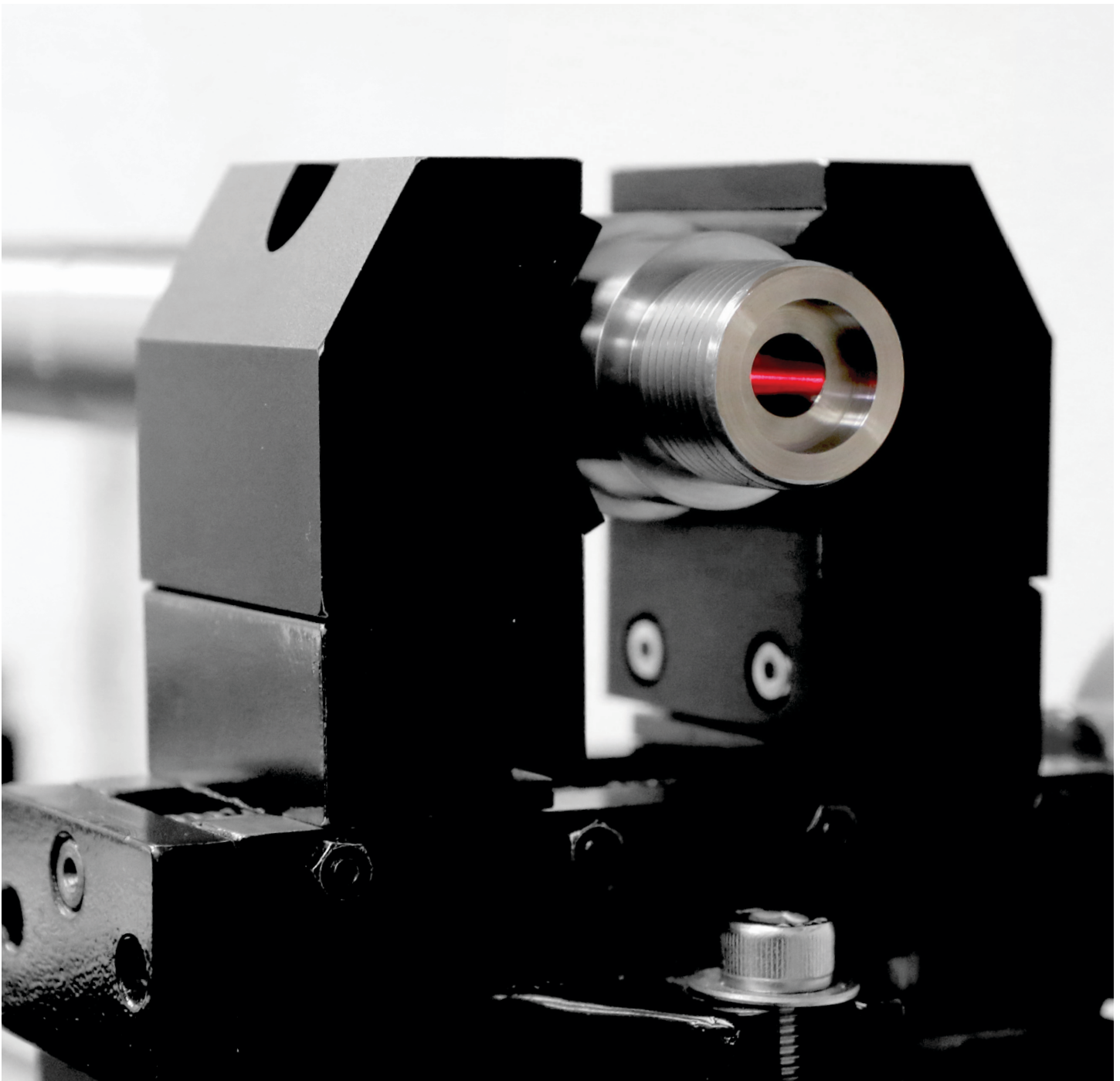
The 3DLC® laser is a tool that allows H-S Precision to measure every internal dimension of your barrel. There is no other tool that can provide this accurate data, and H-S is using it to guarantee the quality and consistency of every barrel manufactured at our factory.

In 2019, H-S invested in laser scanning technology which had

originally been developed to report detailed measurements within rocket nozzles at NASA. Reutilizing the technology for use on a smaller scale produced H-S Precision's quality control process: 3DLC® (three-dimensional laser certified).

H-S Precision is able to determine the quality and consistency of the rifling and the bore using this

technology. Without touching the barrel itself, the LP sensors within the machine act as laser calipers, recording over 3.1 million points of data per inch, precisely measuring the internal dimensions and features of the barrel. Not only does this quantify your barrel's build, but also qualifies it under high quality control standards down to 0.0005" accuracy.



BTE

BALLISTIC TEST EQUIPMENT

H-S Precision is known around the world for our precision rifles and extremely accurate barrels. Engineered from the smallest details, our team can design custom fixtures for many types of special application testing in addition

to supplying standard test equipment. Below are two of our most popular equipment products that are designed, engineered, and manufactured at our factory in Rapid City, South Dakota.



TEST BARRELS

H-S Precision is one of the worlds' leading producers for ballistic test barrels. Many well-known ammunition companies use our barrels for testing the quality and consistency of their ammunition.

- Accuracy Barrels
- Velocity Barrels
- Pressure Barrels



UNIVERSAL RECEIVERS

In 1998, H-S Precision introduced ballistic fixtures designed to complement our line of ballistic test barrels. Equipment is available for pressure and velocity testing, NIJ body armor testing, ballistic armor testing and extreme accuracy testing.

- Mounting Stand & Bracket Included
- Windage & Elevation Adjustments Available

PRO-SERIES® MAGAZINE ASSEMBLIES

ONE OF THE MOST IMPORTANT PARTS OF ANY PRECISION RIFLE IS ITS FEEDING SYSTEM.

Having a floor metal and detachable magazine feeding system is not just a convenient way to carry ammunition.

A quality magazine is an integral part of the function of any precision rifle. H-S Precision's Pro-Series® magazines provide superior protection for projectiles and allow for flawless feeding of cartridges whether you are firing one of our Pro-Series® Rifles

or converting a Remington 700 BDL hinged floor plate into a detachable magazine assembly. Don't miss the shot fumbling for ammo. Be confident, and invest in our proven products that will make a difference on the range and in the field.



DBM CONVERSION KITS & MAGAZINE BOXES

H-S Precision Pro-Series® Detachable Magazine Conversion Kits are designed to convert your Remington 700 BDL hinged floor plate to a detachable magazine box feeding system. The external dimensions are identical to those of

a factory hinged floor plate designed to fit any stock with little to no inletting required. We offer low, medium, and high capacity magazine boxes (in a variety of round quantities) depending on long or short action calibers.



FEATURES INCLUDE

- Floor metals machined from a solid piece of 416 stainless steel
- Stainless steel magazine boxes
- Cerakoted™ in Midnight Black
- Extremely durable polymer boot
- Center feed design
- Adjusting tool available for specific caliber changes

CONVERSION KITS

includes Pro-Series® floor plate & magazine box

Short Action, Low Capacity
Short Action, Medium Capacity
Short Action, High Capacity
Long Action, Low Capacity
Long Action, High Capacity

MAGAZINE BOX ONLY

Short Action, Low Capacity
Short Action, Medium Capacity
Short Action, High Capacity
Long Action, Low Capacity
Long Action, High Capacity

NO GUNSMITHING REQUIRED READY FOR THE RANGE

A PROVEN ACCURACY UPGRADE WITH A DROP-IN FIT.

Many shooters will agree that a quality stock will not only help in your overall accuracy, but the stability and distance of your shot, too. H-S Precision Pro-Series® stocks are

ready right out of the box with a perfect fit and ultra-stiff interface to your rifle's action. Our original proprietary process of engineered, designed, and manufactured stocks starts with molds built in-house. With individual quality inspections throughout every step of production,

the confidence we have in the quality of our composite stocks allows us to offer our customers a lifetime warranty. Accuracy matters, whether you are in a competition or hunting. Fuel your trigger confidence with the astounding precision and strength of an aftermarket H-S Precision stock.

PST025, Sand



AFTERMARKET & OEM STOCK SOLUTIONS

Remington
Howa


WEATHERBY


SAVAGE


RUGER®


WINCHESTER.


CZ-USA


Marlin

A ADJUSTABLE LOP

Having an adjustable length of pull allows the shooter to make small adjustments to ensure the perfect fit. Fixed and adjustable LOP are available in various stock styles

B ADJUSTABLE CHEEK

Available on select models, the adjustable cheek piece allows positive cheek weld to stock and perfect alignment of scope to shooter's eye. Fixed and adjustable cheek pieces are available in various stock styles.

C STRONG GRIP

The aluminum section in the grip adds stiffness and strength to an area that is notoriously weak on traditional rifle stocks. Pistol grips and vertical ambidextrous grips are available in various stock styles.

D BEDDING BLOCK

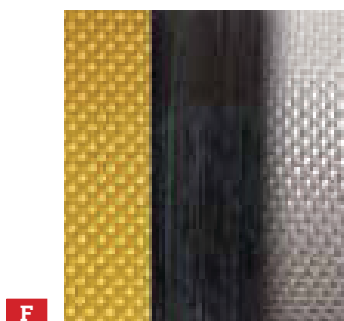
Our aluminum bedding blocks are CNC machined to the exact dimensions of the action it will be used with, ensuring a perfect drop-in fit every time. Full-length and receiver-length bedding blocks are available in various stock styles.

E PRO-CENTER® TECHNOLOGY

This proprietary technology on select stock models provides the ability to align the barreled action in the center of the barrel channel, ensuring a proper fit and free floated barrel.

F DURABLE MATERIAL

The combination of fiberglass, Kevlar®, and carbon fiber yield a strong, rigid stock for a perfect fit. The durability of this process allows us to offer a lifetime warranty on every stock.





COLOR OPTIONS & WARRANTY INFORMATION FOR PRO-SERIES® STOCKS CAN BE FOUND ON PAGE 32.

H-S PRECISION PRO-SERIES® AFTERMARKET STOCKS

PSL155 short action/**PSL154** long action

Remington

Fits: Remington 700 BDL
Carbon Fiber or Varmint
Barrel Contour



PSL155 Black-Tan
specifications below

Barrel Muzzle: 0.913" dia @ 24"
Grip Type: Vertical; 1.59"
Overall Length: 32.2"
Bedding Block: Receiver Length
Length of Pull: Fixed

Forend Width: 2.00"
Stock Body Width: 1.98"
Comb/Cheek Rest: Adjustable
Ambidextrous: Yes
Avg. Weight: 3.25 lbs.

PSS003 short action/**PSS010** long action

Remington

Fits: Remington 700 BDL
Sporter or Hunting
Barrel Contour



PSS010 Olive-Black
specifications below

Barrel Muzzle: 0.675" dia @ 24"
Grip Type: Semi-pistol; 1.61"
Overall Length: 31.1"
Bedding Block: Full Length
Length of Pull: Fixed

Forend Width: 1.47"
Stock Body Width: 1.94"
Comb/Cheek Rest: Fixed
Ambidextrous: Yes
Avg. Weight: 2.35 lbs.

PSV142 short action/**PSV141** long action

Howa



Fits: Howa 1500/Weatherby Vanguard
Factory Carbon Fiber Barrel Contour



PSV141 Olive-Black
specifications below

Barrel Muzzle: 0.750" dia @ 24"
Grip Type: Semi-pistol; 1.61"
Overall Length: 31.2"
Bedding Block: Receiver Length
Length of Pull: Fixed

Forend Width: 1.88"
Stock Body Width: 1.95"
Comb/Cheek Rest: Fixed
Ambidextrous: Yes
Avg. Weight: 2.62 lbs.

PSS092 short action/**PSS021** long action



Fits: Winchester Model 70 (Post '64)
Sporter or Hunting Barrel Contour
Two-Piece Hinged Floor Plate



PSS021 Sand
specifications below

Barrel Muzzle: 0.600" dia @ 24"
Grip Type: Semi-pistol; 1.61"
Overall Length: 31.5"
Bedding Block: Full Length
Length of Pull: Fixed

Forend Width: 1.48"
Stock Body Width: 2.02"
Comb/Cheek Rest: Fixed
Ambidextrous: Yes
Avg. Weight: 2.45 lbs.

PST025 short action/**PST026** long action

Remington

Fits: Remington 700 BDL
Carbon Fiber, Varmint,
or Tactical Barrel Contour



PST025 Gray-Black
specifications below

Barrel Muzzle: 0.900" dia @ 24"
Grip Type: Vertical, palm
swell; 1.91"
Overall Length: 31.9"
Bedding Block: Full Length

Length of Pull: Adjustable
Forend Width: 2.25"
Stock Body Width: 1.98"
Comb/Cheek Rest: Adjustable
Ambidextrous: Yes
Avg. Weight: 3.87 lbs.

PSS152 short action /**PSS033** long action



Fits: Ruger M77 Mark II/Hawkeye
Sporting or Hunting Barrel Contour



PSS033 Black-Pink
specifications below

Barrel Muzzle: 0.562" dia @ 22"
Grip Type: Semi-pistol; 1.62"
Overall Length: 31.6"
Bedding Block: Full Length
Length of Pull: Fixed

Forend Width: 1.56"
Stock Body Width: 1.99"
Comb/Cheek Rest: Fixed
Ambidextrous: Yes
Avg. Weight: 2.42 lbs.

PSS001 short action/**PSS009** long action

Remington

Fits: Remington 700 ADL
Sporter or Hunting Barrel Contour



PSS009 Prairie Grass Camo
specifications below

Barrel Muzzle:	0.675" dia @ 24"	Forend Width:	1.47"
Grip Type:	Semi-pistol; 1.61"	Stock Body Width:	1.94"
Overall Length:	31.1"	Comb/Cheek Rest:	Fixed
Bedding Block:	Full Length	Ambidextrous:	Yes
Length of Pull:	Fixed	Avg. Weight:	2.36 lbs.

PSS108 short action/**PSS016** long action

Remington

Fits: Remington 700 BDL (Left Hand)
Sporter or Hunting Barrel Contour



PSS016 Tan-Black
specifications below

Barrel Muzzle:	0.675" dia @ 24"	Forend Width:	1.47"
Grip Type:	Semi-pistol; 1.61"	Stock Body Width:	1.94"
Overall Length:	31.1"	Comb/Cheek Rest:	Fixed
Bedding Block:	Full Length	Ambidextrous:	Yes
Length of Pull:	Fixed	Avg. Weight:	2.20 lbs.

PSS050 short action

Remington

Fits: Remington Model 7 BDL
Sporter or Hunting Barrel Contour



PSS050 Black-Red
(optional extra stud)
specifications below

Barrel Muzzle:	0.557" dia @ 20"	Forend Width:	1.43"
Grip Type:	Semi-pistol; 1.40"	Stock Body Width:	1.97"
Overall Length:	29.0"	Comb/Cheek Rest:	Fixed
Bedding Block:	Full Length	Ambidextrous:	Yes
Length of Pull:	Fixed	Avg. Weight:	2.19 lbs.

PSS120 short action/**PSS046** long action

Remington

Fits: Remington 700 BDL
Sporter or Hunting Barrel Contour



PSS046 Tan-Black
specifications below

Barrel Muzzle:	0.675" dia @ 24"	Forend Width:	1.48"
Grip Type:	Thumbhole; 1.62"	Stock Body Width:	1.95"
Overall Length:	31.2"	Comb/Cheek Rest:	Fixed
Bedding Block:	Full Length	Ambidextrous:	No
Length of Pull:	Fixed	Avg. Weight:	2.62 lbs.

PSS059 long action

Remington

Fits: Remington 700 BDL
Sporter or Hunting Barrel Contour



PSS059 Black-Tan
specifications below

Barrel Muzzle:	0.675" dia @ 24"	Forend Width:	1.47"
Grip Type:	Semi-pistol; 1.61"	Stock Body Width:	1.94"
Overall Length:	31.1"	Comb/Cheek Rest:	Built-in
Bedding Block:	Full Length	Ambidextrous:	No
Length of Pull:	Fixed	Avg. Weight:	2.33 lbs.

PSS139 short action/**PSS138** long action

Howa

WEATHERBY

Fits: Howa 1500/Weatherby Vanguard
Sporter Barrel Contour



PSS138 Olive-Black
specifications below

Barrel Muzzle:	0.614" dia @ 24"	Forend Width:	1.48"
Grip Type:	Semi-pistol; 1.61"	Stock Body Width:	1.95"
Overall Length:	31.3"	Comb/Cheek Rest:	Fixed
Bedding Block:	Full Length	Ambidextrous:	Yes
Length of Pull:	Fixed	Avg. Weight:	2.38 lbs.

PSV002 short action/**PSV029** long action

Remington

Fits: Remington 700 BDL
Carbon Fiber or Varmint
Barrel Contour



PSV002 TriColor Desert Camo
specifications below

Barrel Muzzle: 0.831" dia @ 24"
Grip Type: Semi-pistol; 1.66"
Overall Length: 31.6"
Bedding Block: Full Length
Length of Pull: Fixed

Forend Width: 1.92"
Stock Body Width: 1.96"
Comb/Cheek Rest: Fixed
Ambidextrous: Yes
Avg. Weight: 2.45 lbs.

PSV079 short action/**PSV080** long action

Remington

Fits: Remington 700 BDL
Straight Bull Barrel Contour



PSV079 Urban Camo
specifications below

Barrel Muzzle: 1.25" dia @ 24"
Grip Type: Semi-pistol; 1.73"
Overall Length: 31"
Bedding Block: Full Length
Length of Pull: Fixed

Forend Width: 2.3"
Stock Body Width: 2"
Comb/Cheek Rest: Fixed
Ambidextrous: Yes
Avg. Weight: 2.5 lbs.

PSV004 short action

Remington

Fits: Remington 700 ADL
Factory Varmint Barrel Contour



PSV004 Granite
specifications below

Barrel Muzzle: 0.831" dia @ 24"
Grip Type: Semi-pistol; 1.66"
Overall Length: 31.6"
Bedding Block: Full Length
Length of Pull: Fixed

Forend Width: 1.92"
Stock Body Width: 1.96"
Comb/Cheek Rest: Fixed
Ambidextrous: Yes
Avg. Weight: 2.48 lbs.

PSV096 short action/**PSV107** long action

Remington

Fits: Remington 700 BDL
Carbon Fiber or Varmint
Barrel Contour



PSV096 Black-Spruce
specifications below

Barrel Muzzle: 0.831" dia @ 24"
Grip Type: semi-pistol, palm
swell; 2"
Overall Length: 30.9"
Bedding Block: Full Length

Length of Pull: Fixed
Forend Width: 2.01"
Stock Body Width: 1.87"
Comb/Cheek Rest: Fixed
Ambidextrous: Yes
Avg. Weight: 2.52 lbs.

PSV070 short action



Fits: CZ 550
Factory Varmint Barrel Contour



PSV070 Green-Tan Camo
specifications below

Barrel Muzzle: 0.860" dia @ 24"
Grip Type: Semi-pistol, palm
swell; 1.98"
Overall Length: 30.5"
Bedding Block: Full Length

Length of Pull: Fixed
Forend Width: 2.13"
Stock Body Width: 1.97"
Comb/Cheek Rest: Fixed
Ambidextrous: Yes
Avg. Weight: 2.58 lbs.

PSV118 short action



Fits: Savage Model 10 FCP
Carbon Fiber, Varmint,
or Tactical Barrel Contour



PSV118 Gray-Black
specifications below

Barrel Muzzle: 1.017" dia @ 24"
Grip Type: Semi-pistol; 1.65"
Overall Length: 31.8"
Bedding Block: Full Length
Length of Pull: Fixed

Forend Width: 2.16"
Stock Body Width: 1.90"
Comb/Cheek Rest: Fixed
Ambidextrous: Yes
Avg. Weight: 2.78 lbs.

PSV140 short action

Howa



**Fits: Howa 1500/Weatherby Vanguard
Varmint Barrel Contour**



PSV140 Green-Tan Camo
specifications below

Barrel Muzzle:	0.822" dia @ 24"	Forend Width:	1.82"
Grip Type:	Semi-pistol; 1.61"	Stock Body Width:	1.95"
Overall Length:	30.8"	Comb/Cheek Rest:	Fixed
Bedding Block:	Full Length	Ambidextrous:	Yes
Length of Pull:	Fixed	Avg. Weight:	2.38 lbs.

PSL158 short action/PSL157 long action

Remington

**Fits: Remington 700 BDL
Carbon Fiber or Varmint
Barrel Contour**



PSL158 Granite
specifications below

Barrel Muzzle:	0.913" dia @ 24"	Forend Width:	2.00"
Grip Type:	Vertical; 1.59"	Stock Body Width:	1.98"
Overall Length:	32.2"	Comb/Cheek Rest:	Fixed
Bedding Block:	Receiver Length	Ambidextrous:	Yes
Length of Pull:	Fixed	Avg. Weight:	2.31 lbs.

PSL135 short action/PSL134 long action

Remington

**Fits: Remington 700 BDL
Heavy Sporter or Light Varmint
Barrel Contour**



PSL134 Black-Gray
specifications below

Barrel Muzzle:	0.750" dia @ 24"	Forend Width:	2.00"
Grip Type:	Vertical; 1.59"	Stock Body Width:	1.98"
Overall Length:	32.2"	Comb/Cheek Rest:	Fixed
Bedding Block:	Full Length	Ambidextrous:	Yes
Length of Pull:	Fixed	Avg. Weight:	2.75 lbs.

PST006 short action/PST011 long action

Remington

**Fits: Remington 700 BDL
Carbon Fiber, Varmint,
or Tactical Barrel Contour**



PST011 Black
specifications below

Barrel Muzzle:	0.900" dia @ 24"	Length of Pull:	Adjustable
Grip Type:	Semi-pistol, palm swell; 2"	Forend Width:	2.22"
Overall Length:	31.5" collapsed	Stock Body Width:	1.87"
Bedding Block:	Full Length	Comb/Cheek Rest:	Fixed
		Ambidextrous:	Yes
		Avg. Weight:	3.15 lbs.

PSL150 short action/PSL149 long action

Remington

**Fits: Remington 700 BDL
Heavy Sporter or Light Varmint
Barrel Contour**



PSL149 Black-Tan
specifications below

Barrel Muzzle:	0.750" dia @ 24"	Forend Width:	2.00"
Grip Type:	Vertical; 1.59"	Stock Body Width:	1.98"
Overall Length:	32.2"	Comb/Cheek Rest:	Adjustable
Bedding Block:	Full Length	Ambidextrous:	Yes
Length of Pull:	Fixed	Avg. Weight:	2.91 lbs.

PST007 short action/PST013 long action

Remington

**Fits: Remington 700 BDL
Carbon Fiber, Varmint,
or Tactical Barrel Contour**



PST013 Black-Gray
specifications below

Barrel Muzzle:	0.900" dia @ 24"	Length of Pull:	Adjustable
Grip Type:	Semi-pistol, palm swell; 2"	Forend Width:	2.22"
Overall Length:	32.2" collapsed	Stock Body Width:	1.87"
Bedding Block:	Full Length	Comb/Cheek Rest:	Adjustable
		Ambidextrous:	Yes
		Avg. Weight:	3.75 lbs.

PST012 short action/**PST087** long action

Remington

Fits: Remington 700 BDL
Carbon Fiber or Varmint
Barrel Contour



PST012 Sand
specifications below

Barrel Muzzle: 0.831" dia @ 24"
Grip Type: Semi-pistol, palm
swell; 2"
Overall Length: 32.6"
Bedding Block: Full Length

Length of Pull: Fixed
Forend Width: 2.22"
Stock Body Width: 1.87"
Comb/Cheek Rest: Fixed
Ambidextrous: Yes
Avg. Weight: 2.8 lbs.

PST114 short action/**PST129** long action



Fits: Savage Model 110 FCP
Carbon Fiber, Varmint,
or Tactical Barrel Contour
12 LRP, 2 hole 4.40" on centers, top bolt release, DBM



PST129 Black-Red
with optional Pic rail
specifications below

Barrel Muzzle: 0.844" dia @ 24"
Grip Type: Vertical, palm
swell; 2.03"
Overall Length: 31.8"
Bedding Block: Full Length

Length of Pull: Fixed
Forend Width: 2.28"
Stock Body Width: 2.08"
Comb/Cheek Rest: Fixed
Ambidextrous: Yes
Avg. Weight: 2.8 lbs.

PST035 short action/**PST036** long action

Remington

Fits: Remington 700 BDL
Carbon Fiber, Varmint,
or Tactical Barrel Contour



PST035 Gray-Black
specifications below

Barrel Muzzle: 0.900" dia @ 24"
Grip Type: Vertical, palm
swell; 1.91"
Overall Length: 32.3"
Bedding Block: Full Length

Length of Pull: Fixed
Forend Width: 2.25"
Stock Body Width: 1.98"
Comb/Cheek Rest: Fixed
Ambidextrous: Yes
Avg. Weight: 2.56 lbs.

PST133 long action

Remington

Fits: Remington 700 BDL (Left Hand)
Carbon Fiber, Varmint,
or Tactical Barrel Contour



PST133 Black
specifications below

Barrel Muzzle: 0.900" dia @ 24"
Grip Type: Vertical, palm
swell; 1.91"
Overall Length: 31.9" collapsed
Bedding Block: Full Length

Length of Pull: Adjustable
Forend Width: 2.25"
Stock Body Width: 1.98"
Comb/Cheek Rest: Adjustable
Ambidextrous: Yes
Avg. Weight: 3.95 lbs.

PST053 short action/**PST055** long action



Fits: Winchester Model 70 (Post '64)

2-piece hinged floor plate

Carbon Fiber, Varmint, or Tactical Barrel Contour



PST055 Brown-Black
specifications below

Barrel Muzzle: 1.00" dia @ 24"
Grip Type: Vertical, palm
swell; 2.02"
Overall Length: 32.3"
Bedding Block: Full Length

Length of Pull: Fixed
Forend Width: 2.12"
Stock Body Width: 1.98"
Comb/Cheek Rest: Fixed
Ambidextrous: Yes
Avg. Weight: 2.72 lbs.

PSM156 lever action



Fits: Marlin 1985 Lever Action
Two-Piece, Big Bore Contour



PSM156 Olive Black (installed)
specifications below

Magazine: Tube
Barrel Muzzle: 0.767" dia @ 18"
Grip Type: Semi-pistol; 1.58"
Bedding Block: Grip Length
Length of Pull: Fixed

Forend Width (tip): 1.49"
Forend Width (widest): 1.58"
Comb/Cheek Rest: Fixed
Ambidextrous: Yes
Avg. Weight: 1.63 lbs.

THE ANSWERS TO YOUR FAQs

Q: How tight should I tighten my action screws?

A: When you order your Pro-Series® stock, instructions will accompany the product. On most stocks (Remington 700 BDL models) the front and rear action screws should both be torqued to 65" lbs. (front screw first; rear screw second). If you have a model with three screws, the smaller screw can be hand tightened as indicated on the accompanied instruction card.

Q: Do I need a gunsmith to install one of your stocks?

A: No. Our stocks are all designed to be a direct drop-in fit without any modification. If you can tighten a screw, you can install one of our stocks.

Q: What happens if my stock cracks or develops a chip?

A: Please give us a call to get a return authorization number and send it back. Our stocks have a lifetime warranty to the original owner.

Q: What is the stock made out of?

A: Our stocks are made of a dense polyurethane foam, Kevlar, woven fiberglass, and unidirectional carbon fiber all surrounding a 7075 aluminum bedding block.

Q: Will the aluminum bedding block help my accuracy?

A: Yes, it can help. The aluminum bedding block is CNC machined to the exact dimensions of the action ensuring a perfect fit that provides a solid foundation for your action while your barrel remains free floated.

Q: Do H-S Precision stocks come with a recoil pad?

A: Yes. A 1" recoil pad will come standard on all of our stocks. A 1" Pachmayr® Decelerator Pad is available as an upgrade recoil pad option.

Q: Are your magazine conversion kits a direct drop-in fit?

A: Yes. Dimensionally they are the same as a factory hinged floor plate.

Q: Will the magazine conversion kits fit AICS mags?

A: No. Our kits are a proprietary fit to H-S Precision magazines.

Q: I have an aftermarket barrel installed on my rifle, will your stocks accommodate a larger barrel contour?

A: Yes. The majority of our stocks are designed for factory barrel contours. However, we do offer a variety of stock options that will accommodate after-market barrels with little to no inletting on the stock.

Q: Do you still offer the older style Gen I magazine boxes?

A: No. They were discontinued in 2012.

Q: How can I tell if I have the Gen I or the Gen II magazines and floor metal?

A: There is a four-digit number stamped on the side of the Gen II magazine box.

AVAILABLE COLORS

STANDARD COLORS

Black, Gray, Tan, Olive, Brown, Spruce, White, Sand, Granite

NON-STANDARD WEBBING COLORS

Red, Blue, Yellow, Pink (custom colors available on request)

CAMOUFLAGE COLORS

Green, Green-Tan, Desert, Winter, Urban, Black-Tan, Pink, Shadow

3-COLOR CAMOUFLAGE COLORS

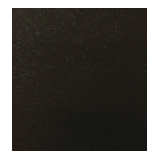
Woodland, Tri-Color Desert

COMPLEX CAMOUFLAGE/VERTICAL PATTERN COLORS

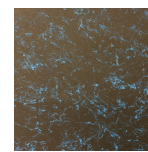
Prairie Grass, Grassland, Winter Grassland

REPAINTING AVAILABLE

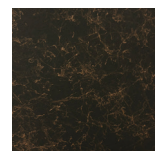
Call for more information



Black



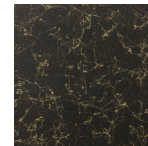
Black-Blue



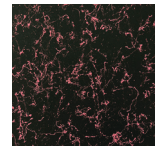
Black-Brown



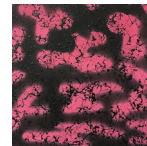
Black-Gray



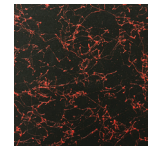
Black-Olive



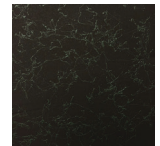
Black-Pink



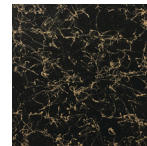
Pink Camo



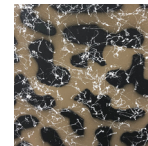
Black-Red



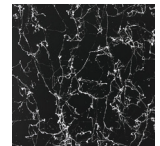
Black-Spruce



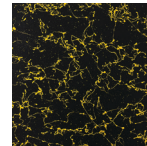
Black-Tan



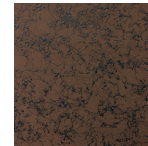
Black-Tan Camo



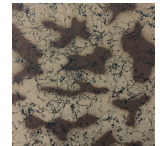
Black-White



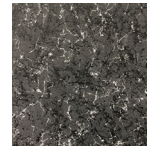
Black-Yellow



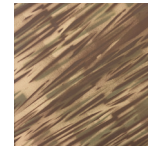
Brown-Black



Desert Camo



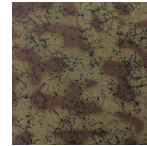
Granite



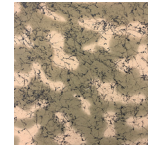
Grassland Camo



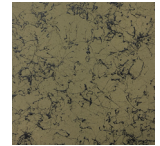
Gray-Black



Green Camo



Green-Tan Camo



Olive-Black



Sand



Spruce-Black



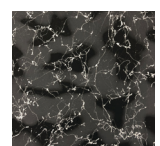
Prairie Grass Camo



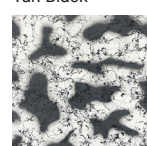
Tan-Black



TriColor Desert Camo



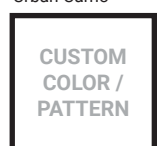
Urban Camo



Winter Camo



Woodland Camo



CUSTOM
COLOR /
PATTERN

ALL COLORS ARE AVAILABLE FOR EVERY
H-S PRECISION PRO-SERIES® STOCK

WARRANTY DETAILS, REFUNDS & RETURN INFORMATION

H-S Precision is a complete gun manufacturer producing high-quality firearms and related products – providing services for the shooting sports industry since 1978. From the complete action (including the floor metal and trigger), the barrel and stocks – we are proud to produce innovative products using world-class techniques, proprietary technology and state-of-the-art equipment. We set our quality, accuracy, and service standards higher than our competition to ensure our customers receive the highest quality products available anywhere.

Because of the confidence we have in our products and production processes, H-S Precision does not provide a written warranty. However, we stand behind our reputation for customer satisfaction. We will consider requests for service or repair of H-S Precision firearms without charge on a case-by-case basis. A determination will be made taking into consideration such things as the age and condition of the firearm, and the circumstances surrounding its malfunction or other problem.

H-S Precision will not be responsible for damage resulting from ordinary wear and tear, alterations by unauthorized persons, accidents, misuse, use of incorrect or other than factory loaded ammunition, or failure to provide reasonable and normal maintenance.

Should any H-S Precision product require service or repair under this policy, please contact our offices to receive a Return Authorization Number.

Shipment must be delivered prepaid to H-S Precision (1301 Turbine Drive, Rapid City, SD 57703).

The product must be accompanied by a proof of purchase and a letter explaining the problem. It should also be insured by the owner at the time of shipment, as H-S Precision is not responsible for damage or shipments lost in transit. H-S Precision will pay all charges to return the product to the owner if it is accepted for service or repair without charge under the provisions of this service policy.

H-S Precision reserves the right to repair or replace any product at our sole discretion.

H-S PRECISION IS NOT LIABLE FOR ANY CONSEQUENTIAL, INCIDENTAL, OR CONTINGENT DAMAGES. ALL SHIPMENTS MUST DISPLAY THE RETURN AUTHORIZATION ON THE OUTSIDE OF THE SHIPPING CONTAINER.

Refunds will be given only if the stock is returned in its original condition within 30 days of shipment. Alterations made to the stock will void any right to a refund. No refunds will be made for special order stocks. Refunds are limited to price paid for the stock and do not include shipment charges. Stocks must be returned to H-S Precision (prepaid) for inspection before any refund can be given.

Note: H-S Precision is obligated to abide by carrier rules and regulations should there be any changes made to shipping regulations.

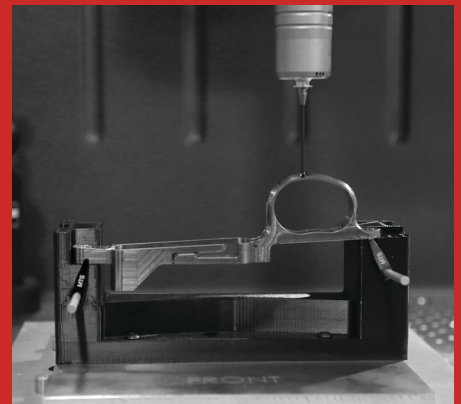
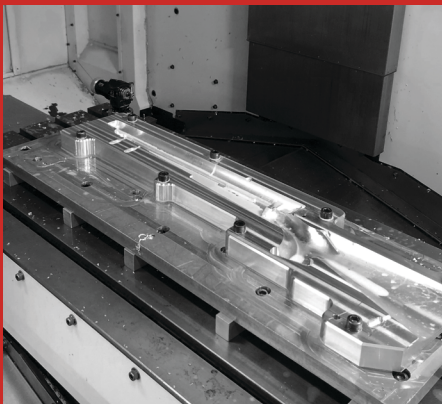
Returns must be made within 30 days, except in the case of manufacturing defect & Pro-Series® Rifles.

H-S Precision must be contacted prior to any returns. Returns for exchange or refund after 30 days are subject to management approval. Please refer to warranty details at hsprecision.com/warranty. All returns or repairs must be shipped pre-paid. Collect shipments will be refused and returned. Shipments should be insured, if appropriate. No credit will be given for shipping charges.

No refunds will be given on Pro-Series® Rifles. Rifles will be repaired and returned.

Special Orders Cannot Be Returned

- Special orders on stocks include but are not limited to: camouflage colors, LOP other than 13.5", recoil reducer installation, extra swivel studs, non-standard color patterns or webbing, decelerator recoil pad.
- Special orders on accessories include: Pelican case cut to fit accessories, bases and/or rings tapped and Teflon coated.
- Any item ordered from H-S Precision that has been modified from its original state (ex. 13.75" LOP) at customer's request cannot be returned.
- This list is not intended to be all inclusive; other items may be considered special order.



CONTACT US

We are happy to answer any questions about H-S Precision's products & services. Give us a call or reach out to us at info@hsprecision.com.

Sales & Technical Support: 605-341-3006
Employment: 605-341-3006 ext. 250
OEM Services: 605-341-3006 ext. 500
Marketing/Media: 605-341-3006 ext. 100



H-S PRECISION®



H-S PRECISION®

**1301 TURBINE DRIVE
RAPID CITY, SOUTH DAKOTA**

PROUDLY MADE IN THE USA

**605-341-3006
HSPRECISION.COM**